



IN-LINE Desiccant Dryers

Van Air In-line Desiccant Dryers are designed to remove water vapor and aerosols at point of use applications with air flows up to 35scfm. Our ID series dryers are the ideal choice for equipment that has intermittent air flow and requires very dry compressed air.

The model ID15 uses a disposable desiccant cartridge. The larger ID35 is filled with loose desiccant. Color indicating silica gel is the standard desiccant for both models. A disposable, molecular sieve desiccant cartridge is also available for the ID15 model.

No regular maintenance is required. Van Air in-line desiccant dryers can be installed inside or outside. Only inlet and outlet air connections are needed. ID series dryers do not require a steady air flow to achieve a constant -40 degrees F pressure dew point. Pressure drop across these dryers is negligible.



Features

- Constant -40 degrees F Pressure Dew Point
- Pressure Drop Less Than 1 PSID at 100 PSIG
- Color Indicating Desiccant
- Designed for Air Flows Up to 35 SCFM
- Indoor and Outdoor Installation

Applications

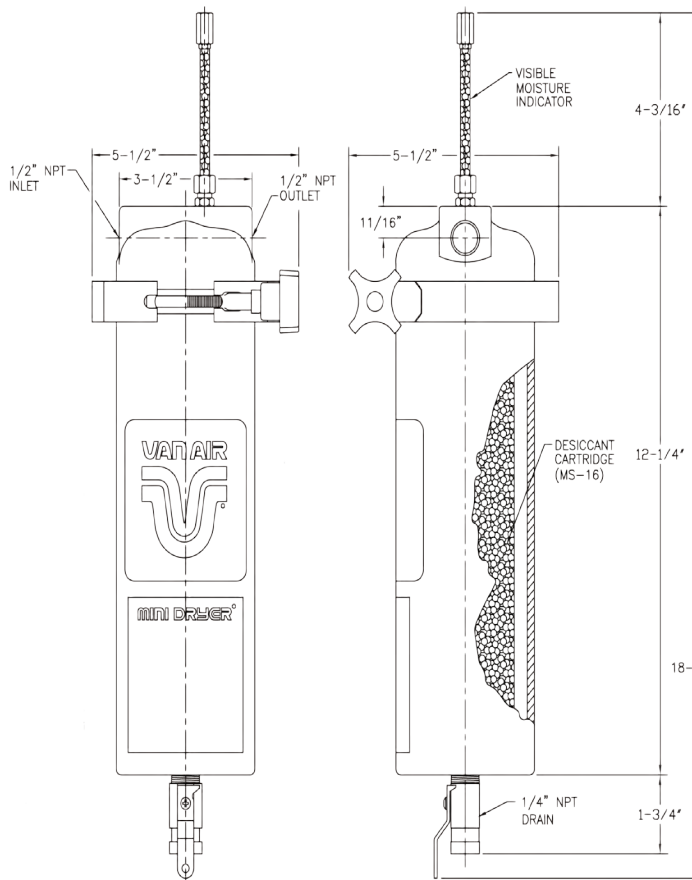
Effective performance in all intermittent flow applications such as:

- Auto Body Paint Systems
- Valve Actuation
- Pneumatic Instrument Protection



Maximum Operating Flow Conditions

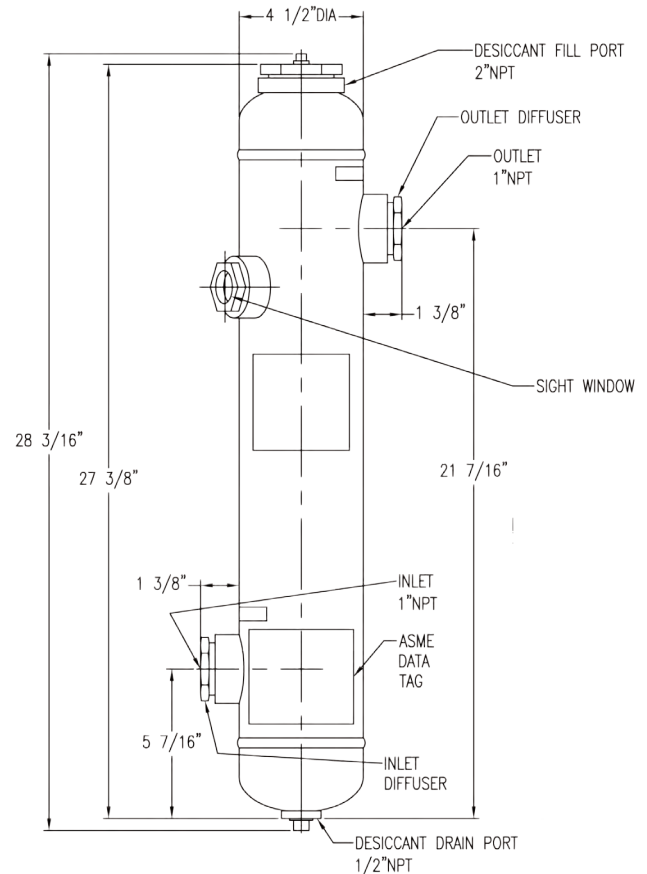
Working Pressure	25 PSIG	50 PSIG	100 PSIG	150 PSIG	200 PSIG	250 PSIG	300 PSIG
Model ID-15	5 SCFM	8.5 SCFM	15 SCFM	21 SCFM	28 SCFM	35 SCFM	40 SCFM
Model ID-35	14 SCFM	20 SCFM	35 SCFM	50 SCFM	66 SCFM	81 SCFM	——



Specifications:

Housing: Cast aluminum alloy
 Maximum working pressure: 300 PSIG Minimum: 5 PSIG
 Maximum inlet air temperature 120 °F
 Inlet & Outlet: 1/2" NPT
 Depressurizing valve: 1/4" brass ball valve manual
 Vessel weight: 4 pounds; with cartridge: 5lbs.
 Cartridge weight: Silica gel 23oz Molecular sieve 16oz.
 Pressure differential: Less than 1 PSID at 100 PSIG
 Finish: Epoxy powder coating
 Clearance required: 10" under housing (for cartridge replacement)
 Sight window: 1/2" diameter (model MD4/SW only)
 Indicator purge flow: Less than 2 SCFH (MD4/IND only)
 Cartridge packaging: Sealed, moisture-proof bag
 (MIL SPEC B-131-E, Class 2)

Distributed by: Air & Vacuum Process, Inc.
 Phone (281)866-9700 Fax (281)866-9717
 sales@airvacuumprocess.com



Specifications:

Housing: Steel, ASME Sec. VIII, Div. I
 Maximum working pressure: 250 PSIG Minimum: 5 PSIG
 Maximum inlet air temperature: 120 °F
 Inlet & outlet: 1NPT
 Vessel Weight: 30 pounds
 Indicating Silica Gel Desiccant: 8 pounds
 Pressure Differential: Less than 1 PSID at 100 PSIG
 Finish: White Enamel
 Sight Window: 1/2' Diameter
 Volume: .18 Cubic Feet
 Capacity: 1.35 Gallons

VAN AIR SYSTEMS

 2950 Mechanic Street
 Lake City, PA 16423
 Phone: (800)840-9906
 Fax: (814)774-0778
 info@vanairsystems.com