

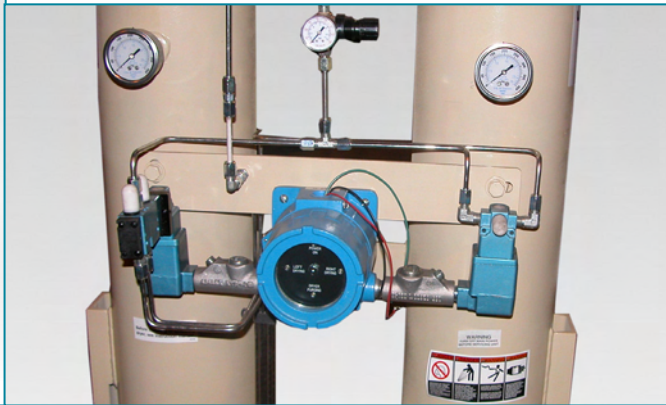


Distributed By  
Air & Vacuum Process, Inc.  
Phone (866)660-0208  
Fax (281)866-9717  
sales@airvacuumprocess.com



# Explosion Proof Heatless Desiccant Dryers

## Safety and Reliability in Demanding Environments



For safety and reliability in the most demanding environments, turn to the HLSX Series of heatless regenerative dryers. They are designed for safe operation in locations classified as hazardous. All components on HLSX dryers are suitable for use in areas defined under the National Electrical Code (NEC) as Class I, Groups C&D, Division 1 or 2. Features include a NEMA 4/7 electrical enclosure and solenoid valves. The HLSX delivers a constant -40°F dew point and protects critical instrumentation and processes in compressed air and natural gas applications.

### Features

- Suitable for Class I, Groups C&D, Division 1 or 2
- 280 PSIG Maximum Working Pressure
- 316 SS Tubing Fittings and Gauges
- Tower Mounted Stainless Steel Pressure Gauges
- Power Supply 115V-1PH-60HZ or 12V DC (for remote installations)
- Color Change Moisture Indicator
- Status LED's: power on, left tower drying, right tower drying, dryer purging.

### Typical Applications

- Refineries & gasoline storage facilities
- Gas processing plants
- Natural gas compressor stations
- Spray finishing areas
- Dry cleaning plants

## Weights and Dimensions

Model No.	Rated flow @ 100 psig (SCFM)	In/Out Connection (inches)	H (inches)	W (Inches)	D (Inches)	Weight (lbs.)	Desiccant Wt. Per Tower (lbs.)
HLSX-55	55	1/2NPT(F)	55	29	20	280	33 ½
HLSX-55-12VDC							
HLSX-80	80	3/4 NPT(F)	64	29	20	340	47
HLSX-80-12DVC							
HLSX-120	120	1 NPT(F)	78	29	20	415	68
HLSX-120-12DVC							
HLSX-150	150	1 NPT(F)	88	29	20	475	83
HLSX-150-12DVC							

Notes: Available voltages 115-1-60 or 12VDC(1.5amps); weight includes desiccant

## Maximum Capacities

SCFM (m<sup>3</sup>/hr) for -40°F PDP

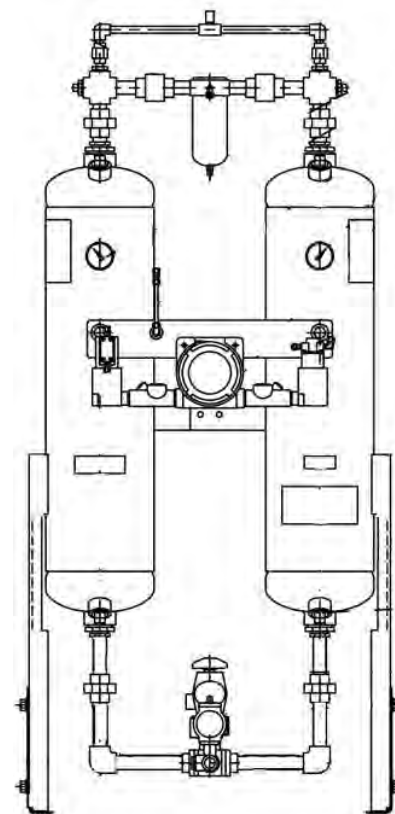
Model No.	60 PSIG 4.1 Bar	100 PSIG 6.9 Bar	125 PSIG 8.6 Bar	150 PSIG 10.3 Bar	200 PSIG 13.8 Bar	250 PSIG 17.2 Bar	280 PSIG 19.3 Bar
HLSX-55	36 61	55 93	61 54	66 112	75 127	84 142	88 149
HLSX-80	52 88	80 136	88 150	96 163	110 186	121 205	128 217
HLSX-120	78 132	120 204	132 224	144 245	164 278	182 308	192 325
HLSX-150	98 166	150 255	166 282	180 306	205 347	228 386	240 406

Maximum Capacities based on 100 PSIG, 100°F Inlet and 100% RH.

**Correction factors:** Multiply maximum capacity by .9 for 110°F, .8 for -100°F dew point (4 minute NEMA cycle)

**Operation conditions:**

	Maximum	Minimum
Pressure:	280 PSIG	60 PSIG
Inlet Air Temperature:	120°F	40°F
Ambient Temperature:	120°F	40°F



Distributed by:

Air & Vacuum Process, Inc.  
 Phone (866)660-0208  
 Fax (281)866-9717  
 sales@airvacuumprocess.com