

FHP Series High Pressure Air & Gas Filters



Easy to use, built to last

All Van Air FHP Series filters are designed for ease of use and built to provide lasting service for your air or gas system.

No bolts to increase costly maintenance time and money.

Threaded housings facilitate element changeout.

Strong element cores maintain element integrity under maximum pressures.

High quality, 316 polished stainless steel housings provide the ultimate in corrosion resistance and housing strength.

For pressures of 1450 and 5000 psig, economical zinc plated carbon steel housings are also available.

A variety of sizes and filtration grades

Van Air FHP Series high pressure filters are available in 21 housing sizes, connection sizes from 1/4" to 2" and flows of 6 to 670 scfm @ 100 psig. These models cover three maximum pressures of 725, 1450 and 5000 psig.

Nine element grades offer various filtration levels for oil and water, particle and oil vapor removal.

Standard Specifications

Filter Housing:

316 polished stainless steel
Mounting bracket holes
NPT connections of 1/4" to 2"
Threaded drain plug
Buna-N body o-ring
Maximum working pressure (WOG):

FHP-#-7.25 = 725 psig

FHP-#-14.5 = 1450 psig

FHP-#-50 = 5000 psig

Options & Accessories

Zinc plated carbon steel housing with epoxy powder coating (1450 and 5000 psig MWP models only)

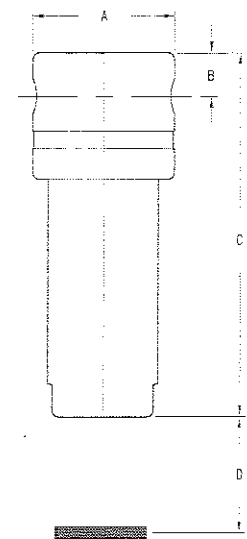
Dependability under pressure

When the pressure's on, depend on Van Air FHP Series high pressure filters for effective oil aerosol, water and particle removal from your compressed air or gas system.

Three model ranges handle pressures of 725, 1450 and 5000 psig for applications such as PET molding, test facilities, lab research sites, natural gas installations and many others.

Dimensions and Weights

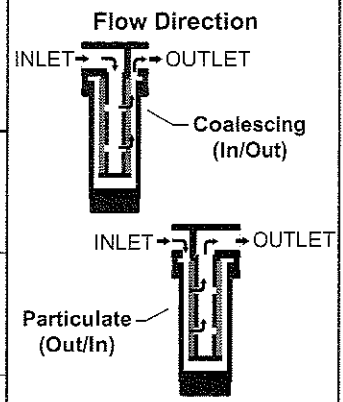
MODEL NO.	Rated Flow @ 100 psig* SCFM	In/Out Conn. in	A in	B in	C in	D in	Drain Conn. in	Weight Incl. Element lbs	Replacement Element Model No.
FHP-20-7.25-(*)	20	1/4 NPT	3.5	.75	6.75	3	1/8	4	E100-15-(*)
FHP-40-7.25-(*)	40	3/8 NPT	3.5	.75	8.25	4	1/8	4.5	E100-30/E200-55-(*)
FHP-70-7.25-(*)	67	1/2 NPT	3.5	.75	10.25	4	1/8	5	E100-50-(*)
FHP-105-7.25-(*)	100	3/4 NPT	4.5	1	10.75	6	1/4	9	E100-105-(*)
FHP-200-7.25-(*)	200	1 NPT	4.5	1	16.75	12	1/4	11	E100-200-(*)
FHP-325-7.25-(*)	333	1 1/2 NPT	6	2	20.75	12	1/4	33	E100-325/400-(*)
FHP-400-7.25-(*)	400	2 NPT	6	2	20.75	12	1/4	33	E100-325/400-(*)
FHP-670-7.25-(*)	667	2 NPT	6	2	32.5	19.75	1/4	46	E101/102-500-(*)
FHP-20-14.5-(*)	17	1/4 NPT	2.75	1	5.5	3	1/4	4.5	EHP-15-(*)
FHP-50-14.5-(*)	52	1/2 NPT	2.75	1	10	7.25	1/4	6	EHP-50-(*)
FHP-75-14.5-(*)	74	3/4 NPT	3.5	1	11	10	1/4	13.5	EHP-70-(*)
FHP-110-14.5-(*)	110	1 NPT	5.25	1	10.5	6	1/4	23	EHP-100-(*)
FHP-195-14.5-(*)	193	1 NPT	5.25	1	19	12	1/4	32.5	EHP-185-(*)
FHP-275-14.5-(*)	276	1 1/2 NPT	6	2	20.75	12	1/4	48.5	EHP-275-(*)
FHP-550-14.5-(*)	552	2 NPT	6	2	32.5	19.75	1/4	62	EHP-550-(*)
FHP-6-50-(*)	6	1/4 NPT	1.75	.5	4.25	2.5	1/4	1.5	EHP-6-(*)
FHP-15-50-(*)	15	1/4 NPT	2.75	1	5.5	2.75	1/4	4.5	EHP-15-(*)
FHP-35-50-(*)	33	1/2 NPT	3.5	1	8.25	6	1/4	12.5	EHP-30-(*)
FHP-70-50-(*)	67	3/4 NPT	3.5	1	11.25	10	1/4	13.5	EHP-70-(*)
FHP-100-50-(*)	99	1 NPT	5.5	1	15	8	1/4	32	EHP-100-(*)
FHP-175-50-(*)	172	1 NPT	5.5	1	20.75	12	1/4	38.5	EHP-185-(*)



Due to our policy of continuous improvement, dimensions and specifications may change without notice. Request certified drawing for pre-piping. *Correction factors: 725 psig models: 200 psig = 1.4, 300 psig = 1.7, 725 psig = 2.6 1450 psig models: 1000 psig = 3.0, 1250 psig = 3.3, 1450 psig = 3.5 5000 psig models: 1500 psig = 3.6, 2000 psig = 4.2, 3500 psig = 5.5, 5000 psig = 6.6

Filtration Grades

Application	Element Grade	Purpose	Nominal Particulate Removal /ISO 8573.1 Class	Max. Oil Carryover PPM w/w /ISO 8573.1 Class	Clean, Dry Drop PSID	Max. Inlet Pressure °F
Oil removal	AA	Extra coarse coalescing	25µ/5	7.8/5	.40	225
	A	Coarse coalescing	5µ/3	3.9/4	.50	225
	B	General purpose coalescing	1µ/2	.78/3	.75	175
	C	High efficiency coalescing	.01µ/1	.008/1	1.50	125
Particulate removal	RAA	Extra coarse particulate	25µ/5	-	.40	225
	RA	Coarse particulate	5µ/3	-	.50	225
	RB	General purpose particulate	1µ/2	-	.75	225
	RC	High efficiency particulate	.01µ/1	-	1.50	225
Oil vapor removal	RD	Vapor absorbing	.01µ/1	.004/1	1.50	80



Filter Sizing

- Match the filter's inlet and outlet ports to your system pipe size.
- Select a model assuming the maximum flow condition at the minimum pressure. Also be sure the maximum operating pressure does not exceed the maximum rated pressure of the filter.
- Multiply by all appropriate correction factors.

Example: Model FHP-40-7.25 rated for 40 scfm @ 100 psig... 1) What is the rated flow at 300 psig? 2) At 725 psig?
 1) 40 scfm x 1.7 = 68 scfm @ 300 psig 2) 40 scfm x 2.6 = 104 scfm @ 725 psig

How to Order

To order a complete filter or a replacement element, add the filtration grade letter to the model number. (Each housing requires one replacement element.)

Complete Filter Example: FHP-40-7.25-C = high pressure, high efficiency coalescing filter for 40 scfm @ 100 psig

Element Example: E100-30/E200-55-C = element for FHP-40-7.25-C

Distributed by:

Air & Vacuum Process, Inc.

Toll Free 866-660-0208

Fax 281-866-9700

Email: sales@airvacuumprocess.com

VAN AIR SYSTEMS INC



2950 Mechanic Street, Lake City, PA 16423 USA

Phone: (814) 774-2631, (800) 840-9906

Fax: 814/774-0778

E-mail: vanair@vanairsystems.com

www.vanairsystems.com