



EDV-2006 Terminator™ Solenoid Drain Valve

- Protect Against Damage from Liquid Carryover
- Reliable and Inexpensive
- Easy to Adjust Variable Open and Cycle Times
- Solid State Timer
- Indoor or Outdoor Installation
- NEMA 4 Lexan Enclosure
- Standard Units Rated to 300 PSIG
- Integral Isolation Valve & Strainer
- Easy to Use Test Function



Terminate Condensate in Your Air Lines:

Cooling, drying and filtering your compressed air is only part of the air treatment process. In a 100 SCFM system operating at 100 PSIG in ambient conditions of 70°F and 50% RH, **each 8-hour shift produces 2 1/2 gallons** of condensate which must be removed from the system.

Time & Money Savings:

The inexpensive and reliable Terminator™ electric drain valve

automatically removes condensate from your air system and has an integral strainer to prevent clogging. It saves time and money by eliminating the need for time-consuming manual draining or leaving manual drains cracked open (wasting valuable compressed air).

Adjustable to Your Particular Needs:

With adjustable valve open and cycle times, the Terminator™

can be set for your operating conditions. The valve open time may be set for 1 to 60 seconds and the cycle time may be set for 1 to 60 minutes.

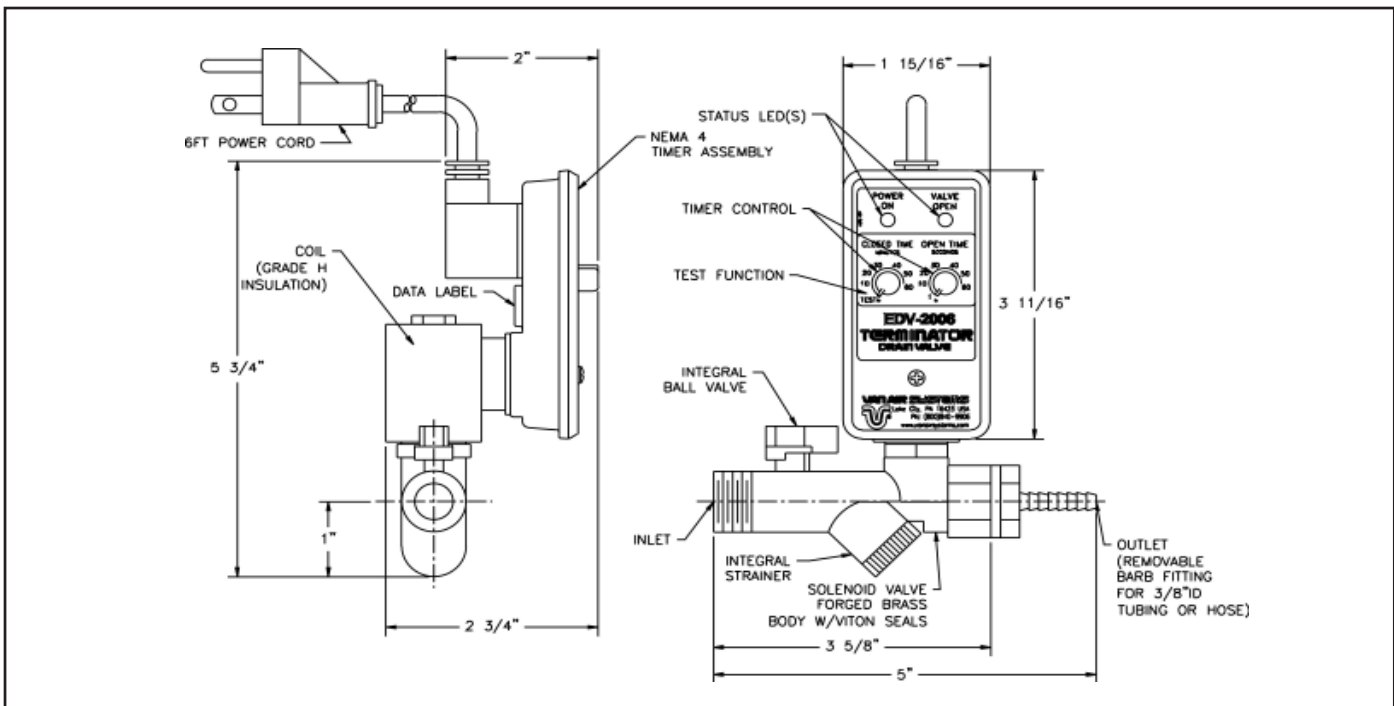
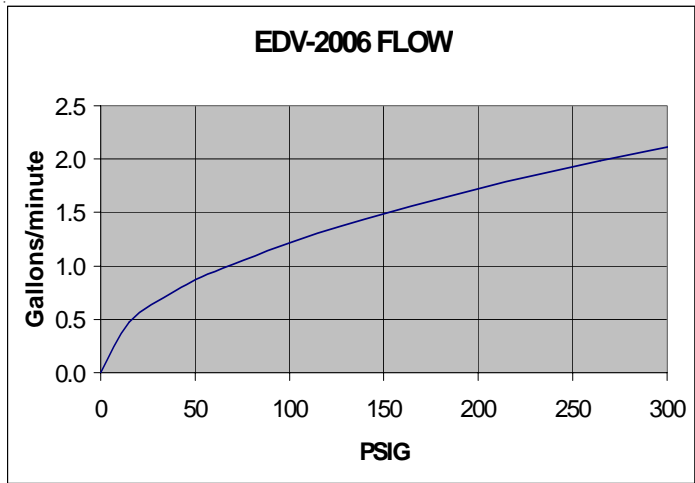
Applications:

The Terminator™ is excellent for automatic draining of compressed air equipment such as

- Filters
- Drop legs
- Receivers
- Separators
- Aftercoolers
- Refrigerated dryers

STANDARD SPECIFICATIONS

Cycle Time (Valve Closed)	1 to 60 min.
Open Time	1 to 60 sec.
Power Cord w/ Plug	6 ft., 18/3 wire
Valve Seals	Viton
Enclosure	NEMA 4/Lexan
Valve Body	Brass
Power on LED	Green
Valve Open LED	Yellow
Test Function	On Timer Knob
Manual Isolation Valve	Ball Type
Integral Strainer	Stainless Steel
Barb Fitting	3/8" ID Tubing or Hose
Temperature Range	35-130 °F/ 0-54°C



Van Air Part No.	Dual Inlet Connection Size (NPT)	Outlet Connection Size (NPT)	Valve Orifice	Working Pressure Range (PSIG / BAR)	Electrical (V - PH - HZ)	Current (AMPS)	Fluid Temp Range (°F / °C)	Approx Weight (lbs / Kg)
39-10500	1/4" (F) 1/2" (M)	1/2" (F)*	5/32"	0-300 / 0-20.7	115 - 1 - 50/60	.09	32-132 / 0-56	1.6 / .7
39-10501	1/4" (F) 1/2" (M)	1/2" (F)*	5/32"	0-300 / 0-20.7	230 - 1 - 50/60	.04	32-132 / 0-56	1.6 / .7
39-10502	1/4" (F) 1/2" (M)	1/2" (F)*	5/32"	0-300 / 0-20.7	12V DC**	1.6	32-132 / 0-56	1.6 / .7

*Removable 1/2"NPT x 3/8"ID. Hose Barb Included

**Power Cord Terminates in Pigtails

Distributed By: Air & Vacuum Process, Inc.
 Phone (281)866-9700
 Toll Free (866)660-0208
 Email: sales@airvacuumprocess.com

